

APPROACHING RETIREMENT AGE: HEALTH AND RESOURCES OF 50 TO 64-YEAR-OLDS FROM 1968 TO 2000

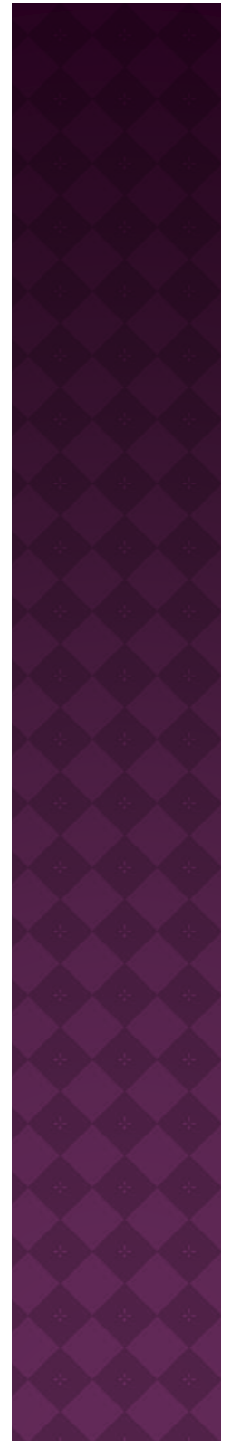
Marti G. Parker
Susanne Kelfve
Carin Lennartsson

Karolinska Institutet
& Stockholm University



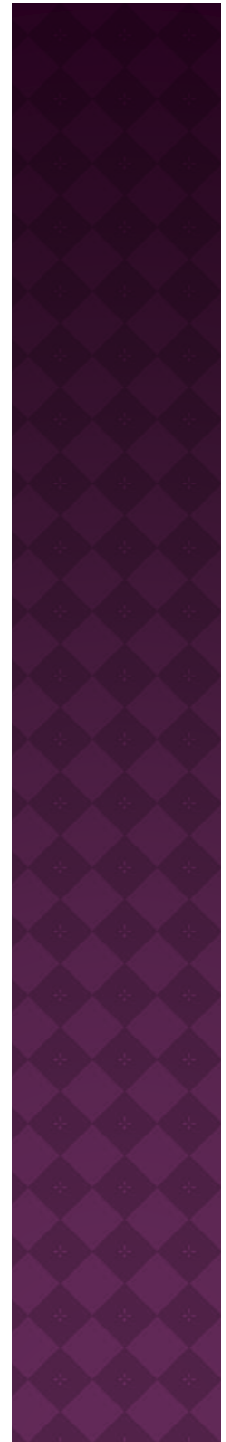
BACKGROUND

- ◉ Studies to estimate care needs usually study those who already have needs
- ◉ This study looks at younger age groups
- ◉ Assumption: Health and health behavior in middle age predict health and health behavior in old age



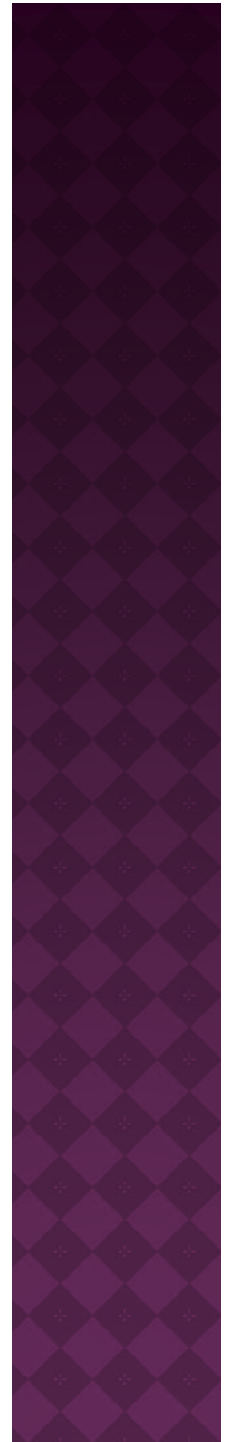
QUESTIONS

- How have patterns of health in people aged 50 to 64 changed over time?
- How have their patterns of health resources and behavior changed over time?



METHOD

- ◉ Level of Living Survey 1968, 1981, 1991, 2000
- ◉ Nationally representative samples
- ◉ Identical fieldwork and items



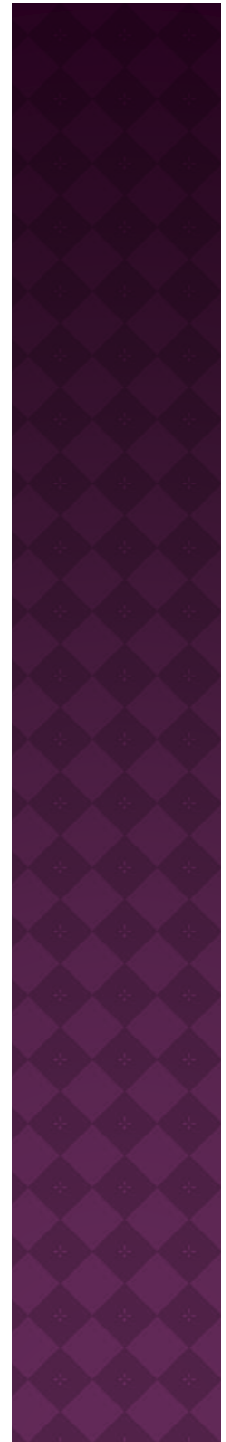
SAMPLES

50-64 year-olds

n	1968 1904-1918	1981 1917-1931	1991 1927-1941	2000 1936-1950
Men	733	616	558	711
Women	725	606	566	684
Total	1458	1222	1124	1395

HEALTH VARIABLES

- ◉ Circulation
- ◉ Pain
- ◉ Mobility
- ◉ Hearing
- ◉ Diabetes
- ◉ Overweight
- ◉ Dental status

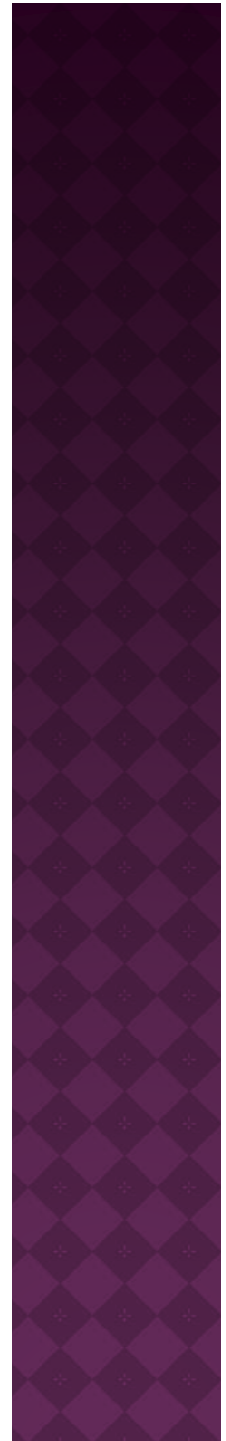


HEALTH RELATED VARIABLES

- ◉ Education
- ◉ Occupation
- ◉ Smoking
- ◉ Civil status

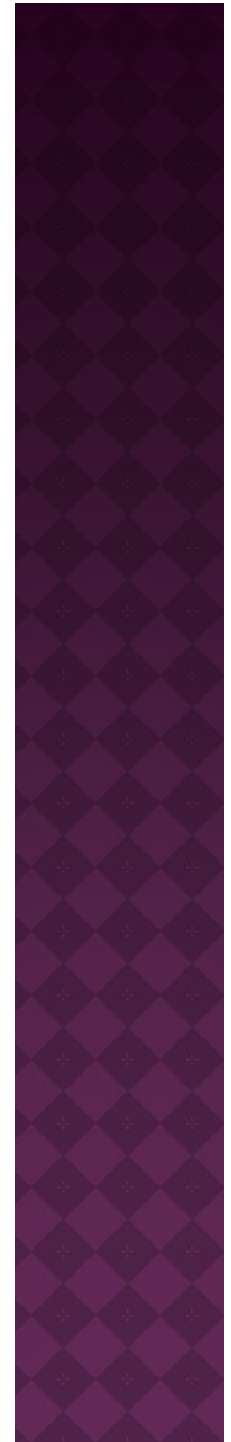
- ◉ Care visits

- ◉ Country of birth
- ◉ Ability to appeal a decision



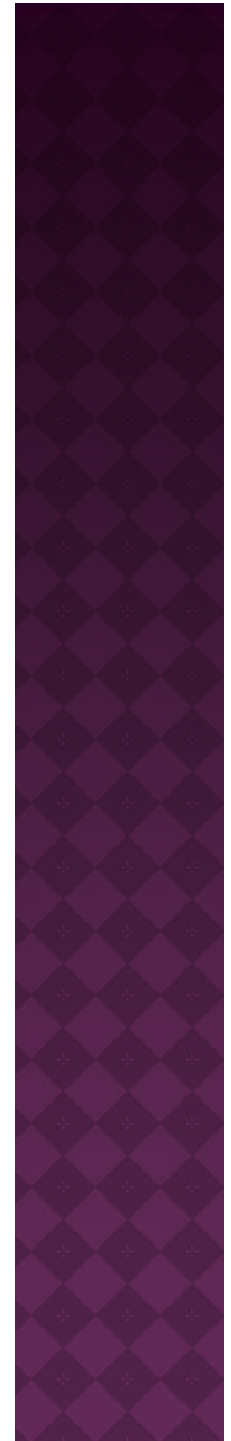
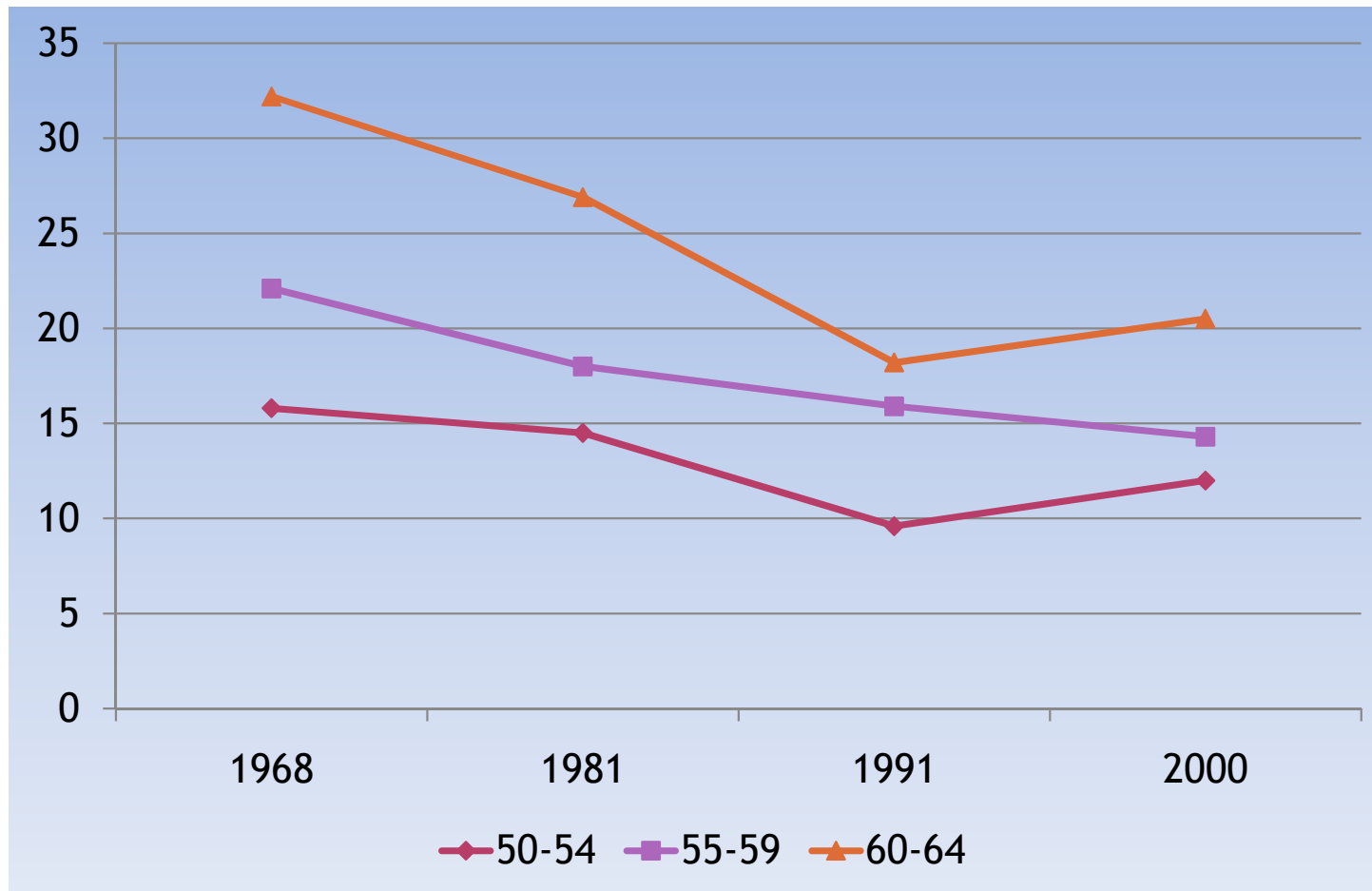
GOOD NEWS

	1968	2000	p
Poor mobility	22.9	15.0	<.001
Poor dental status	60.1	10.2	<.001



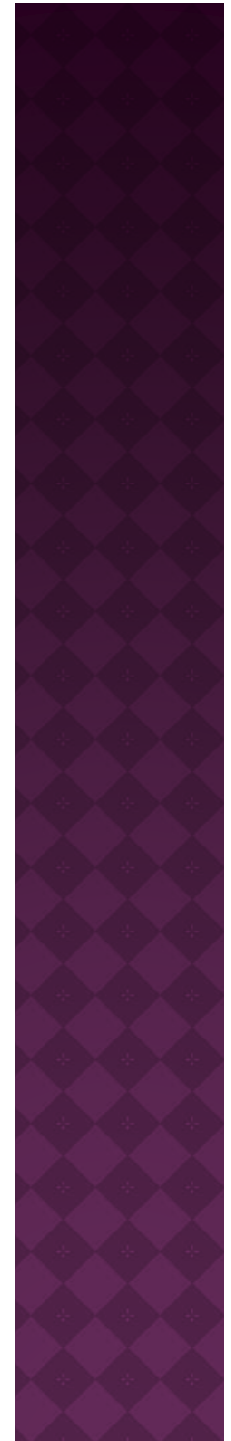
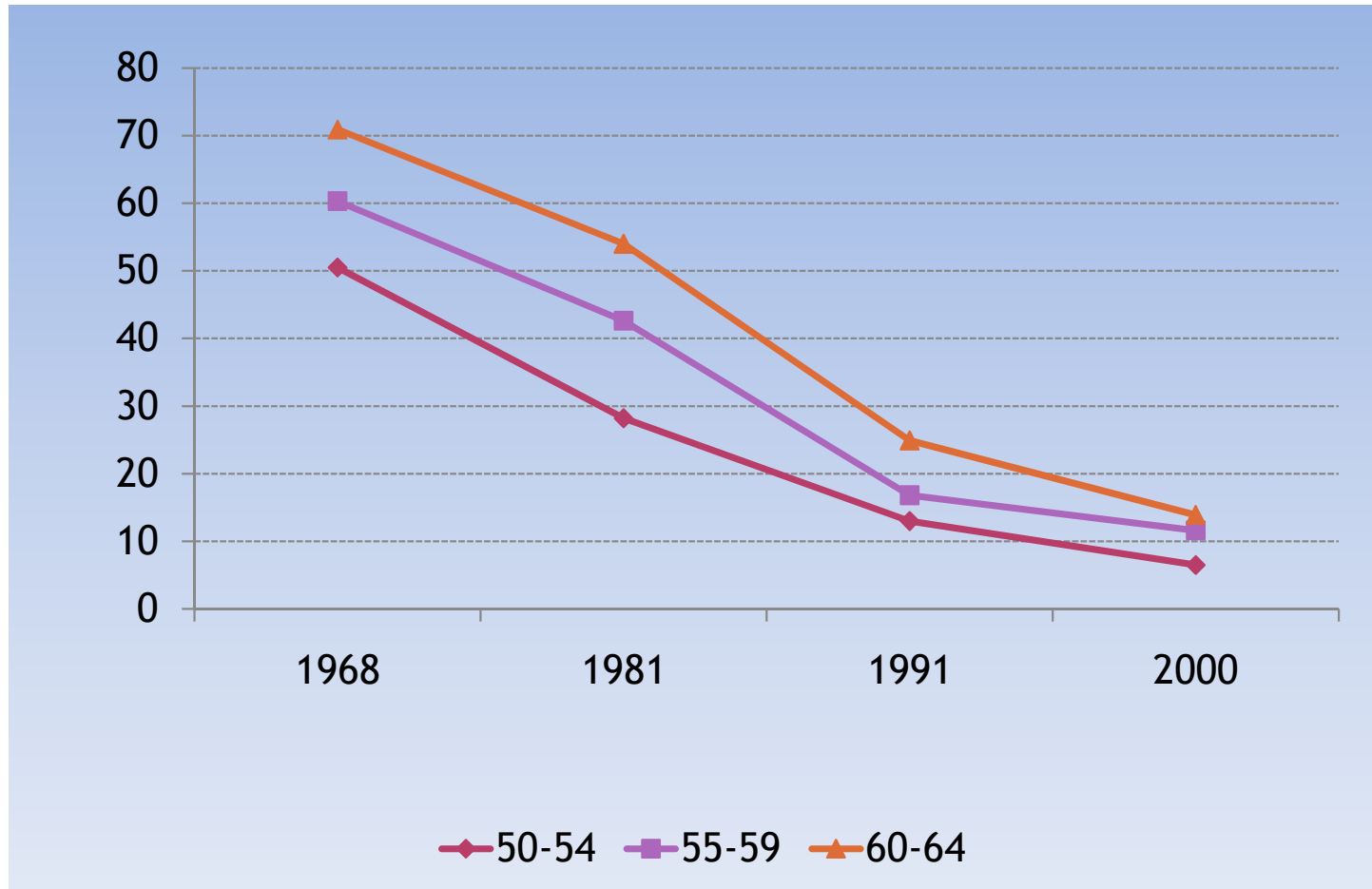
POOR MOBILITY

changes over time by age group (%)



POOR DENTAL STATUS

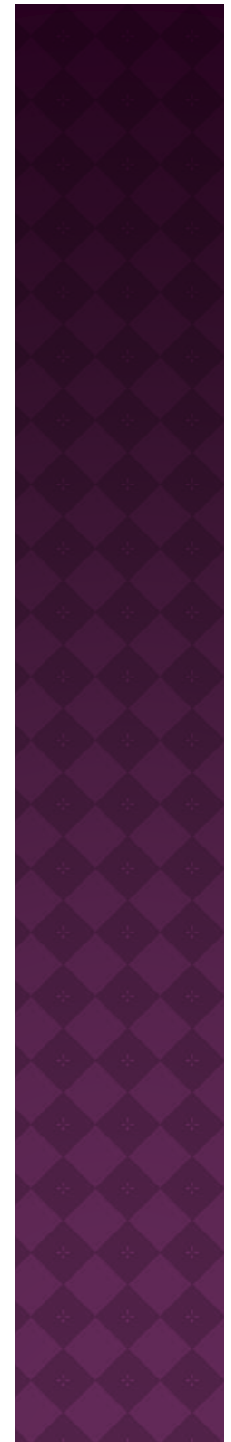
changes over time by age group (%)



BAD NEWS

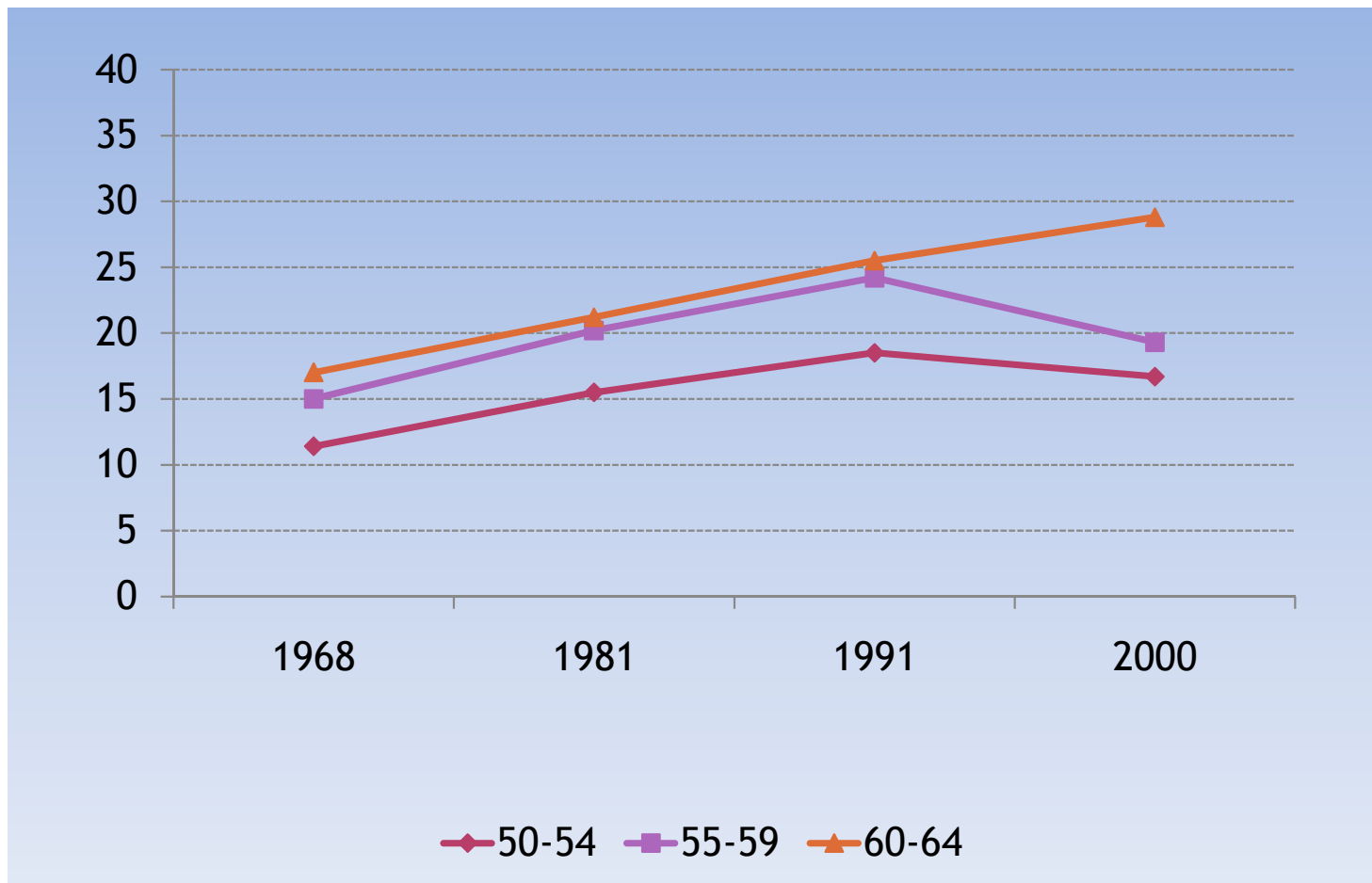
	1968	2000	p
Diabetes	1.8	4.2	<.001
Hearing problems	14.3	20.8	<.001
Overweight	16.2	20.9	.001

	1991	2000	p
BMI	25.25	25.68	.004



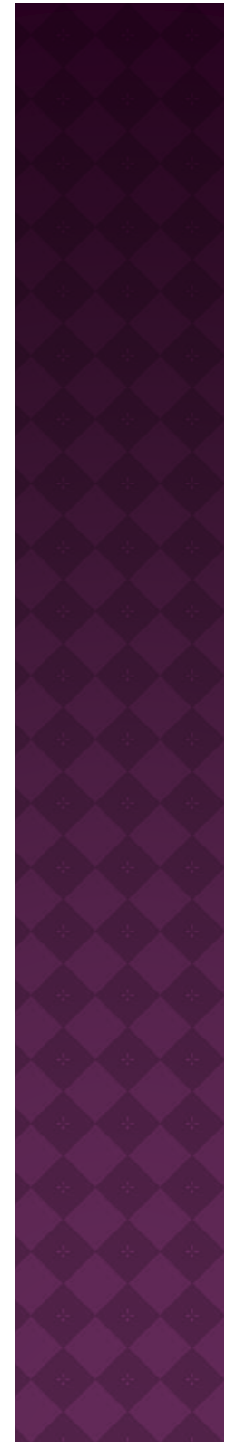
HEARING PROBLEMS

changes over time by age group (%)



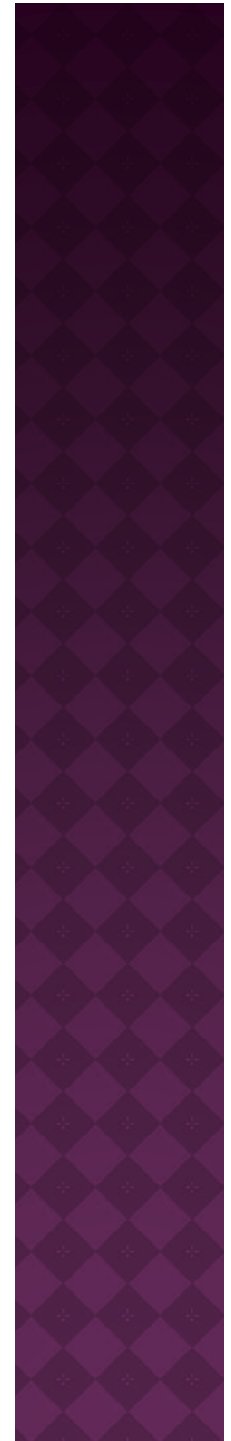
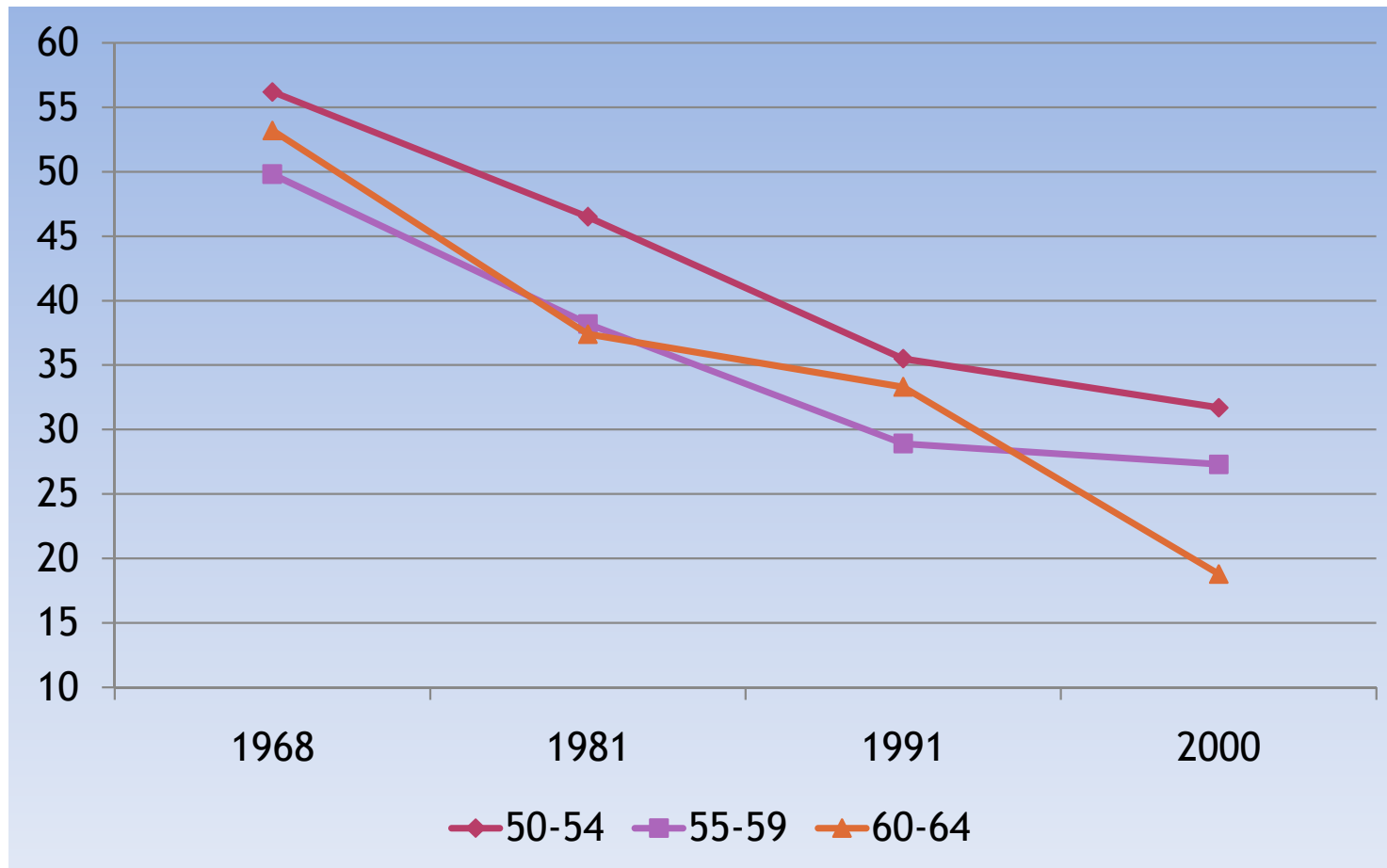
GOOD NEWS/BAD NEWS

		1968	2000	p
Circulation problems	Men	8.6	9.2	.721
	Women	16.5	10.8	.002
Pain	Men	26.3	28.1	.461
	Women	32.6	41.9	<.001
Smoking	Men	53.0	26.7	<.001
	Women	19.5	26.8	<.001



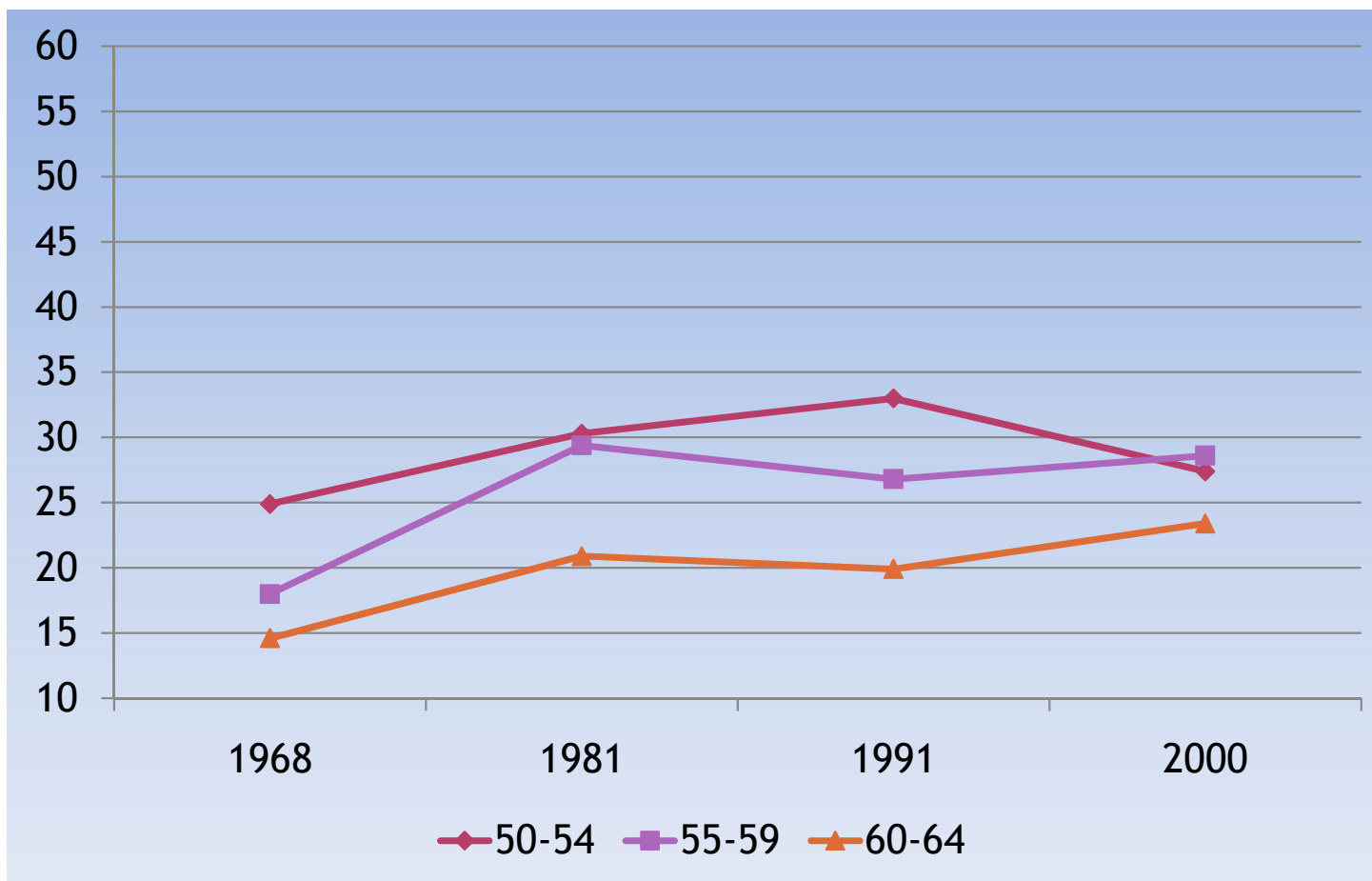
MALE SMOKERS

changes over time by age group (%)



FEMALE SMOKERS

changes over time by age group (%)

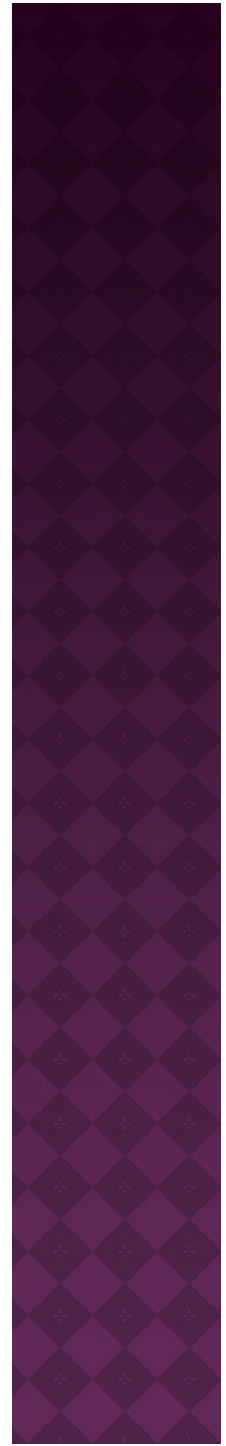


OTHER NEWS

	1968	2000	p
Education (μ)	7.42	11.35	<.001
White collar	27.1	50.8	<.001
Physician visits	56.4	63.9	<.001
Dentist visits	40.2	83.0	<.001
Ability to appeal	80.1	94.5	<.001
Country of birth	3.2	11.0	<.001

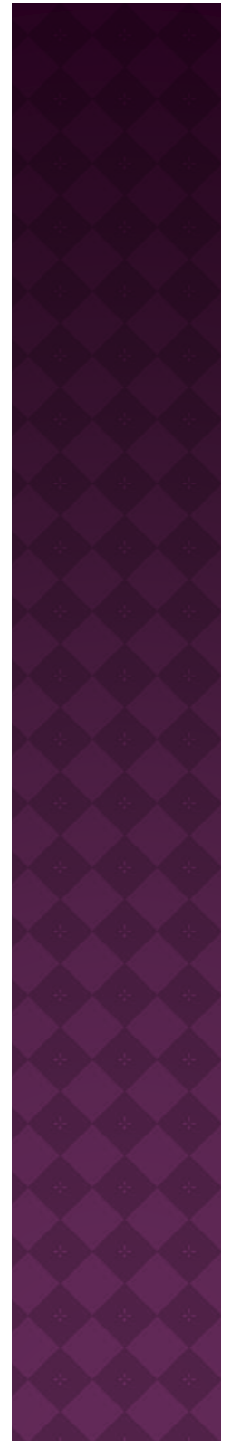
NO NEWS

	1968	2000	p
Married/co-habiting	76.7	78.1	.377



CONCLUSIONS/QUESTIONS

- ⦿ Each cohort is unique
- ⦿ Gender differences apparent
- ⦿ Diminishing age effects
- ⦿ Improvement up until 1991



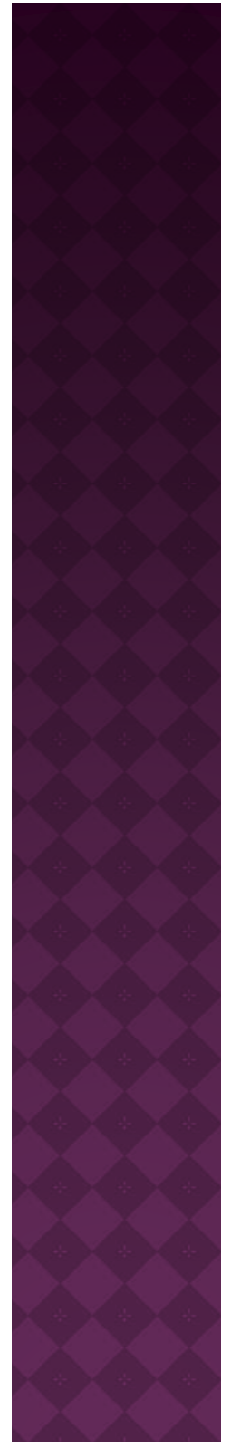
FUTURE CARE NEEDS?



LESS NEED FOR CARE

- ◉ Improved mobility
- ◉ Improved circulation (women)
- ◉ Fewer smokers (men)

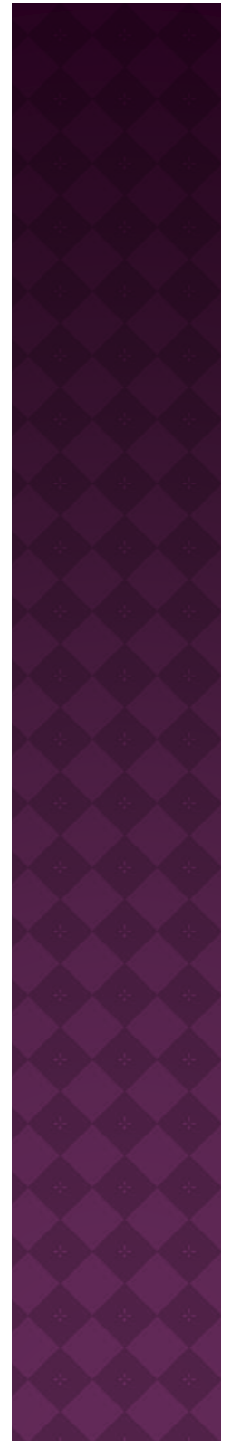
- ◉ Better education
- ◉ More white collar



MORE NEED FOR CARE

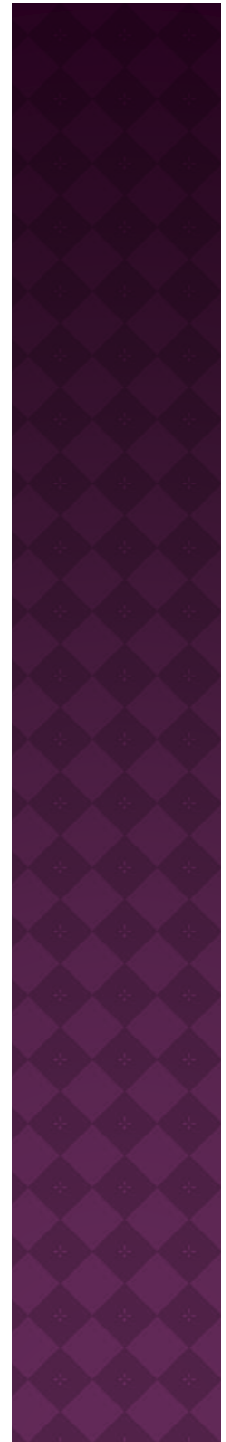
- ◉ Increased overweight
- ◉ Increases in diabetes
- ◉ More hearing problems
- ◉ More pain (women)
- ◉ More smokers (women)
- ◉ Better dental status

- ◉ Better education
- ◉ More white collar
- ◉ Increased ability to appeal



FUTURE CARE NEEDS?

- ⦿ Signs of improved overall health
- ⦿ Some important exceptions
- ⦿ Signs that coming cohorts will have higher expectations concerning care utilization
- ⦿ Signs that coming cohorts will be more diverse



THANK YOU

