

Changes in Health Expectancy and in Disability free Life expectancy in Catalonia, 1994-2000.

R Gispert, X Puig, Torné MM,
Puigdefàbregas A, Tresserras R.

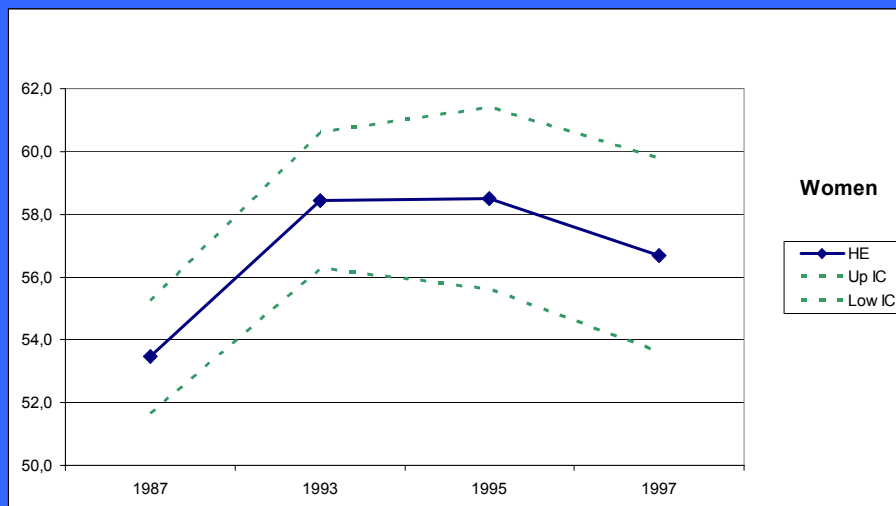
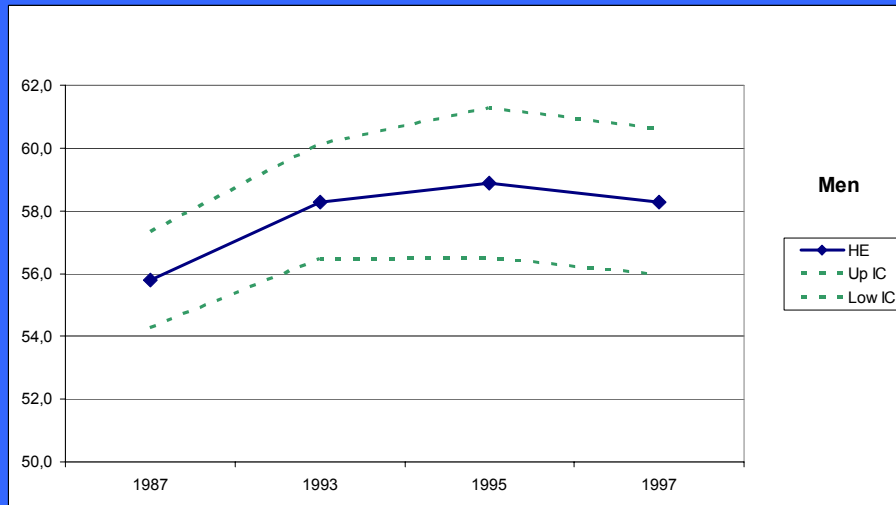
REVES-06. Amsterdam May 29-31

Support: RCESP C03/09

Background

Trends in HE and DFLE at birth for Catalonia (a northeast region of Spain), using data from Spanish health and disability interview surveys suggest that the health status of the population improved in the past but after stabilized/worsened.

HE for Catalonia from Spanish HIS data



Problems

Questions in the Spanish surveys to obtain data to calculate DFLE and HE are not always comparable

Sample sizes at regional level of the Spanish HIS are low

Aims

To evaluate the changes on the health status of the population between 1994-2000 in Catalonia (the period of implementation of the health plan)

Data

- Disability and health perceptions : self rated list of functional limitation + disability items and health status question (Catalan Health Interview Survey)
- Data Sources: census 1994, 2000/ mortality 1994, 2000/ Catalan HIS 1994 (n=15,000), Catalan HIS 2001-2 (n=8,400)

Disability/Functional limitation items

- Seeing
- Hearing
- Speaking
- Communication
- Mobility outside
- Walking

- Using stairs
- Handling
- Dependence of vital-devices
- Self-care
- Future disability (< 6 years)

Methods

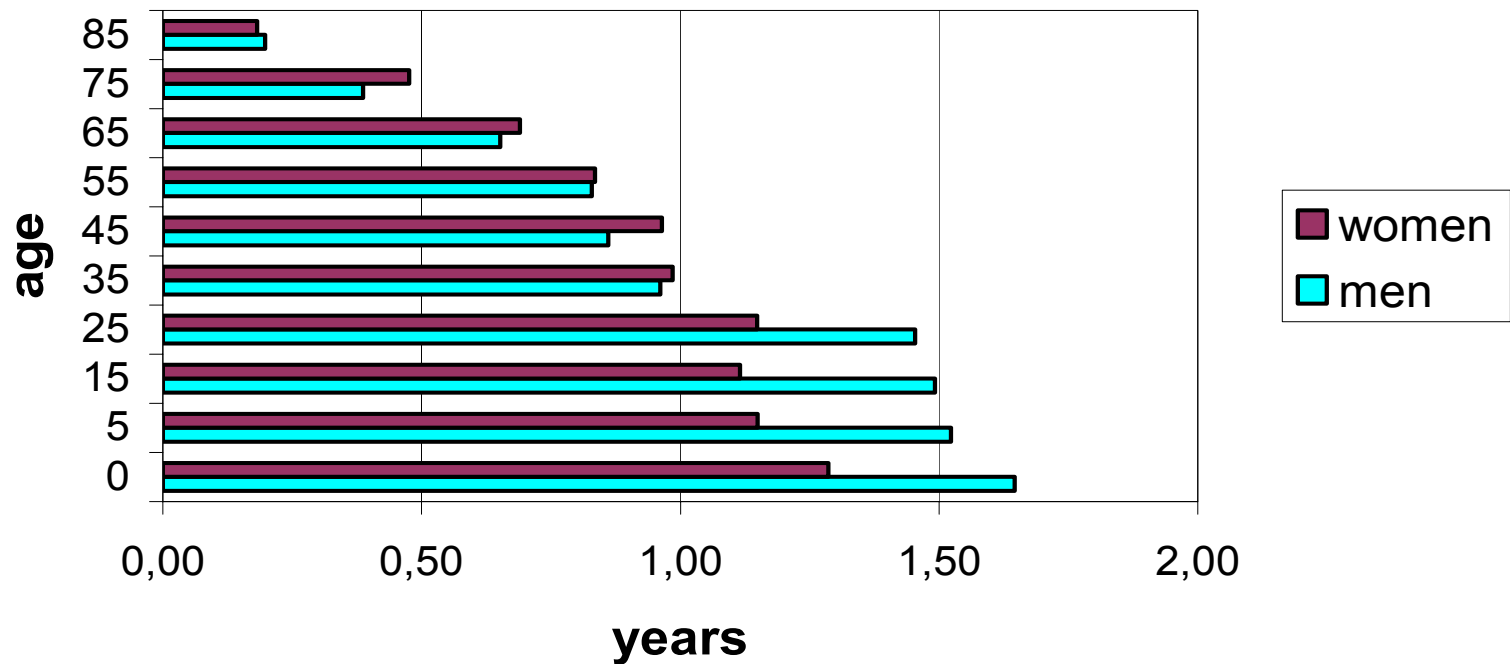
- Prevalence of disability (at least one item of the list of 10) by age and gender.
- Self-perceived health (good: excellent + very good + good/ poor: bad +very bad).
- Life expectancy by age and gender
- Sullivan Method , SE (REVES)

LE, DFLE, HE for Catalonia 1994,2000

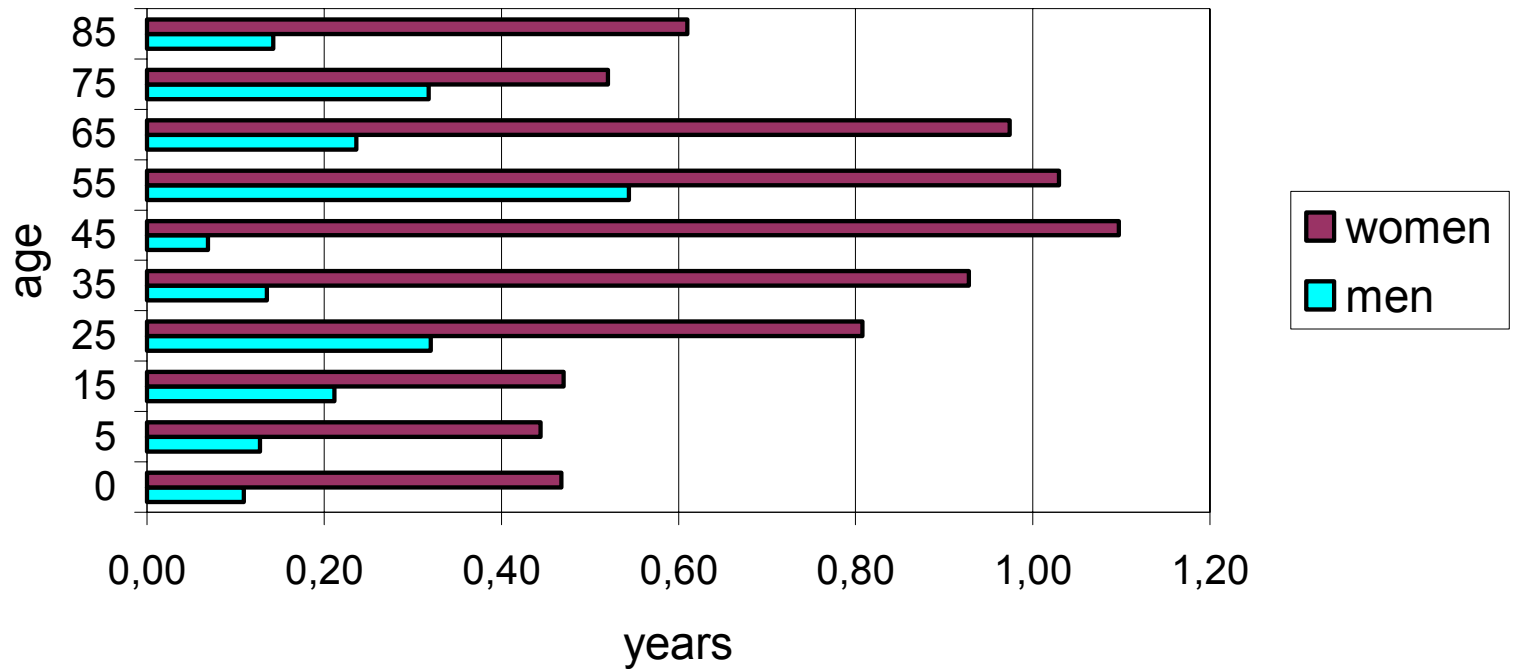
At birth		LE	DFLE	DFLE/LE %	HE	HE/LE %
Men	1994	74,84	66,67	89,08	59,88	80,01
	2000	76,49	66,78	87,31	60,93	79,66
Women	1994	81,95	68,54	83,63	58,04 *	70,82
	2000	83,24	69,00	82,90	60,65 *	72,87

* Significant

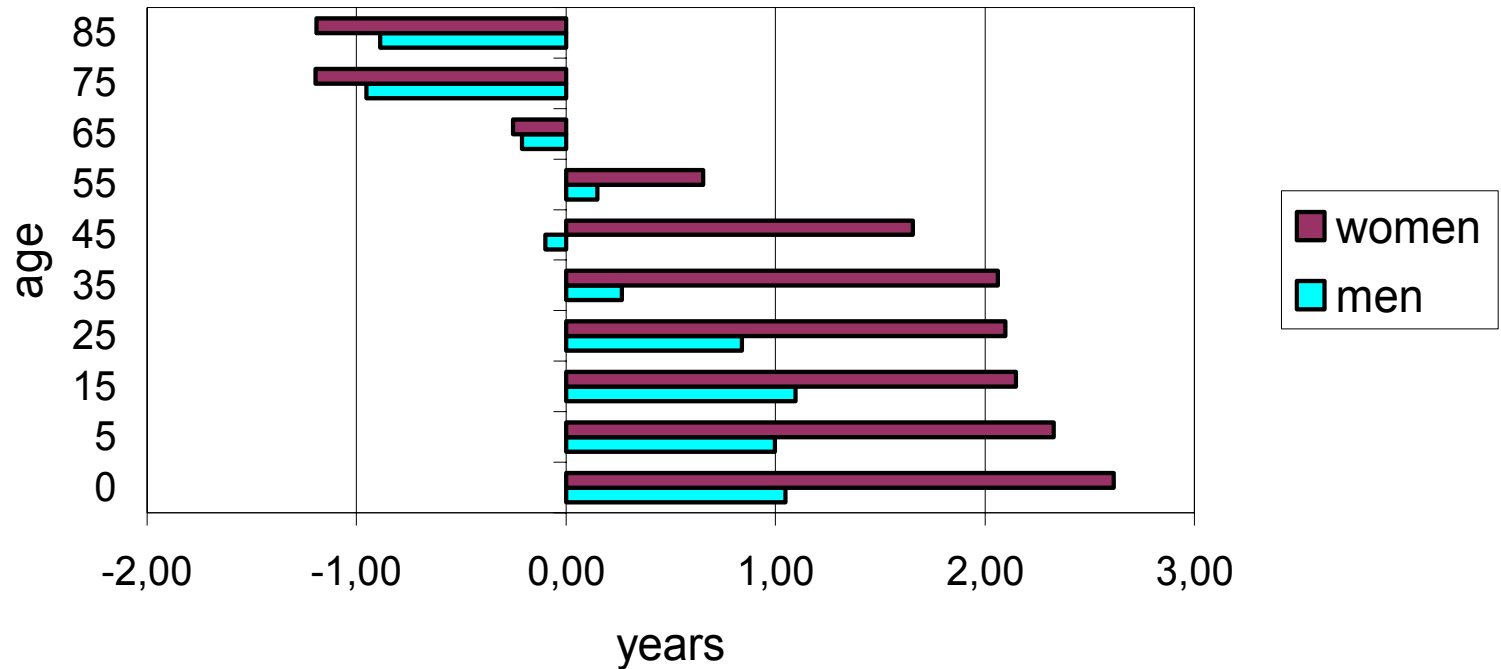
Life Expectancy differences. Catalonia 1994-2000



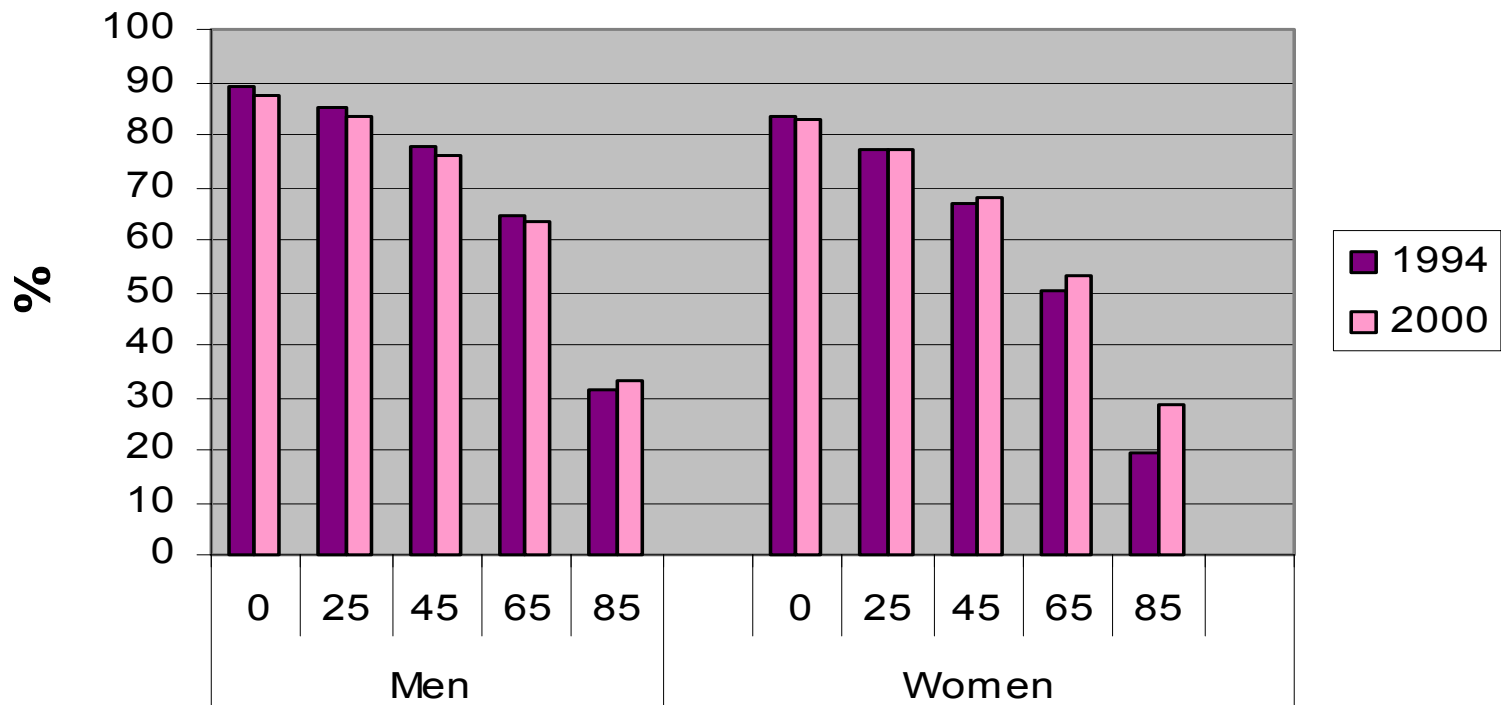
Disability free Life Expectancy differences. Catalonia 1994-2000



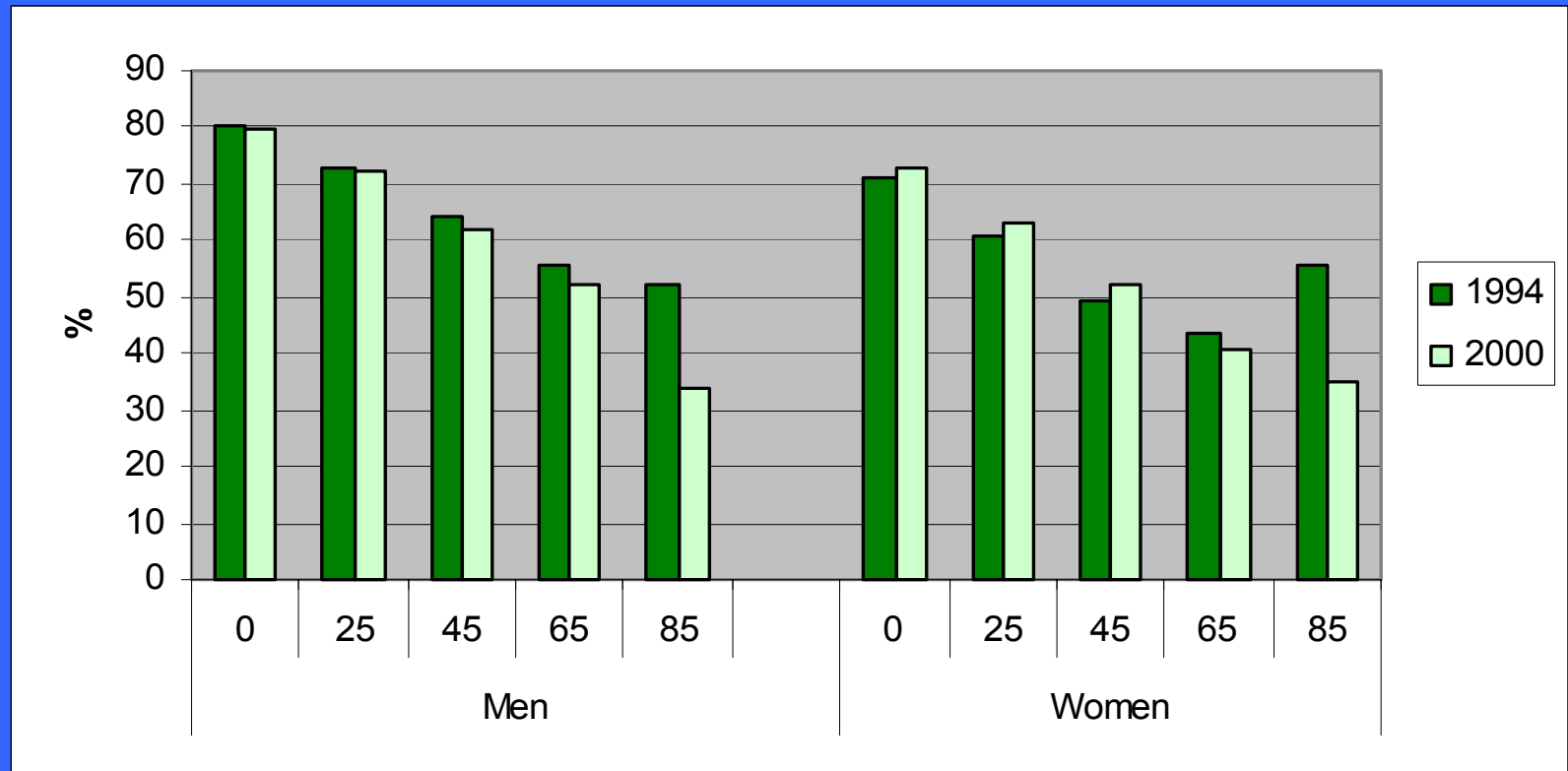
Health Expectancy differences. Catalonia 1994-2000



Disability free life expectancy (% of LE) Catalonia 1994-2000



Health expectancy (% of LE) Catalonia 1994-2000



Discussion

- LE, DFLE and HE have increased during the period, both for women and for men (except HE in oldest than 65)
- Only changes for women HE at birth are statistically significant
- DFLE and HE increments are mainly due to the increase of the total LE

Discussion

- In relative terms:
- DFLE has decreased in young (men and women) but it has increased in old women
- HE has decreased in old men and women but it has increased in young women

Conclusions

- Only a few changes in Health Expectancy indicators are statistically significant, nevertheless:
- HE indicators suggest that, in general terms, health is worsening for men.
- For women it seems the opposite: Health perceptions improved in young and Disability in old women