

A comparison of health expectancies in the EU25: results from the EHLEIS project

Carol Jagger, Jean-Marie Robine,
Herman Van Oyen and the EHLEIS team

Outline

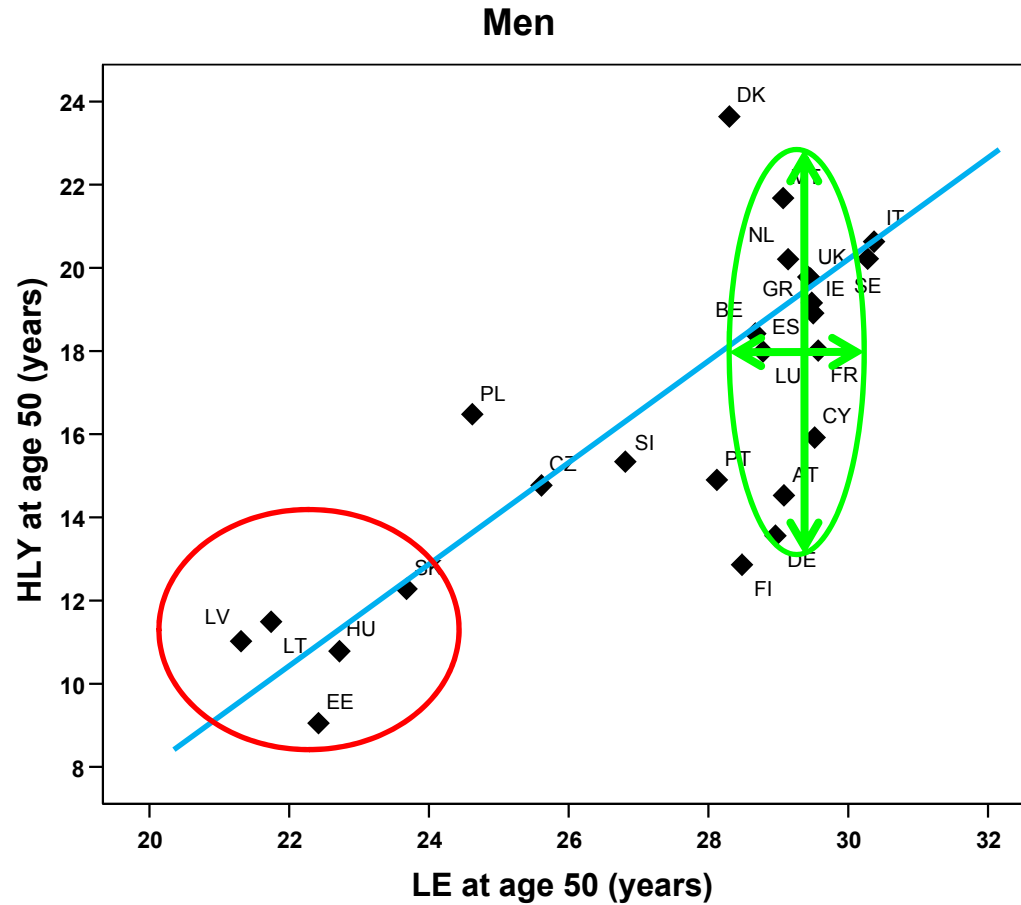
- Background
 - Health expectancy measures
 - 2005 main findings
- Stability of HE between 2005 and 2006
- Relationship between changes in different HEs

BACKGROUND

HE from EU-SILC

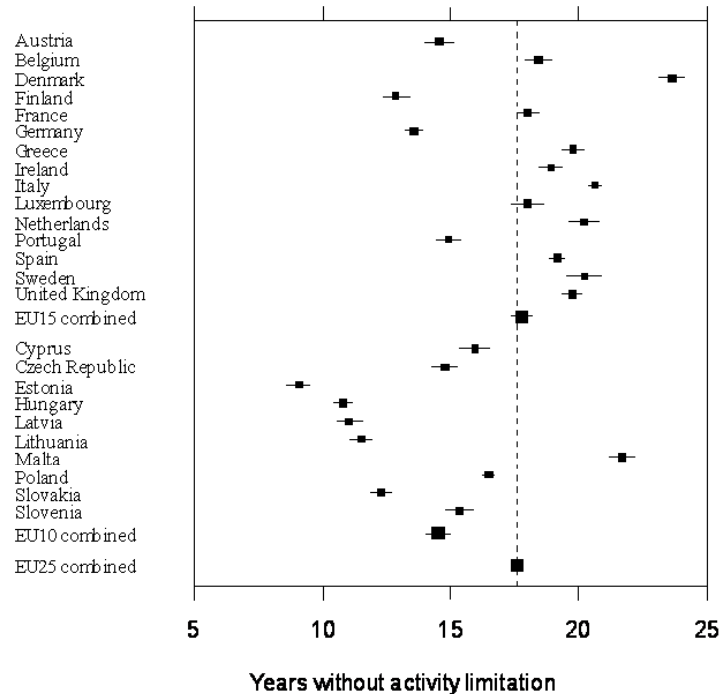
- EU Statistics on Income and Living Conditions (EU-SILC) contains the Mini European Health Module:
 - How is your health in general? Very good / good / fair/ bad / very bad.
 - Do you suffer from (have) any chronic (long-standing) illness or condition (health problem)? Yes/ No.
 - For the past 6 months or more have you been limited in activities people usually do because of a health problem ? Yes, strongly limited / Yes, limited / No, not limited. (HLY)

Life years and HLY at age 50, 2005

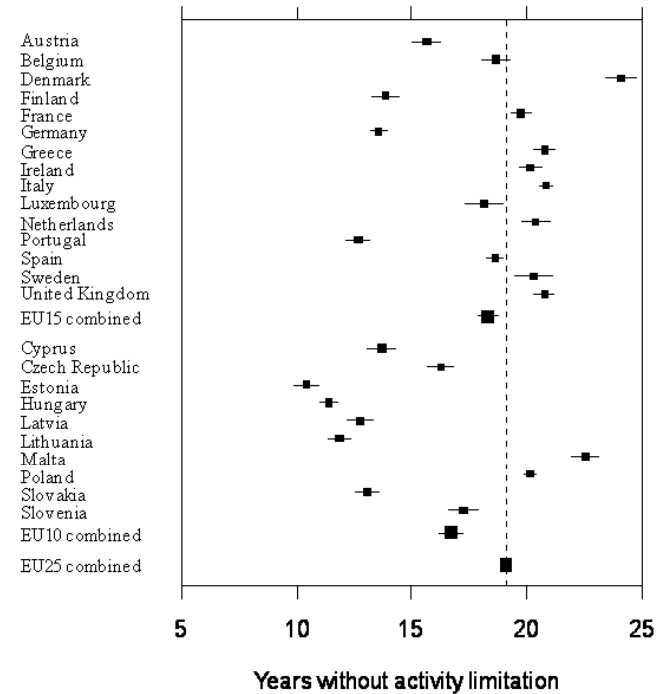


Variation in HLY at age 50, 2005

HLY in men



HLY in women



STABILITY 2005-6

LE increase at age 50 in the EU, 2005-2006

LE and health expectancies at age 50 in EU 25

Year	LE	HLY	LE good SPH	LE without morbidity
------	----	-----	-------------	----------------------

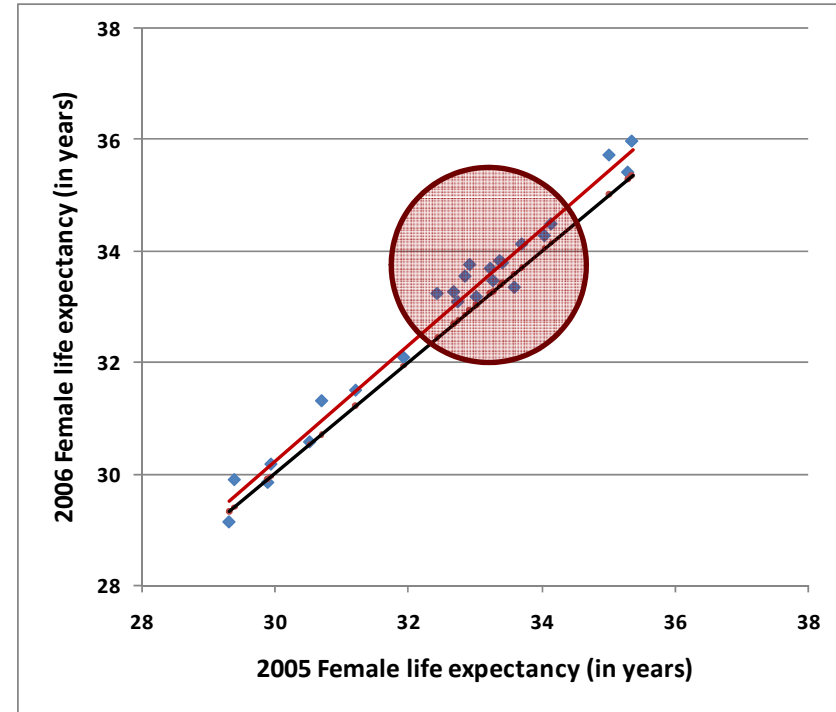
Men

2005	28.6	17.3	12.5	14.7
2006	28.9	17.6	12.7	14.8
Gap	0.4	0.4	0.3	0.1

Women

2005	33.5	18.1	12.4	15.8
2006	33.9	18.1	12.8	15.9
Gap	0.4	0.0	0.4	0.1

LE at age 50 in the EU, change 2005-2006



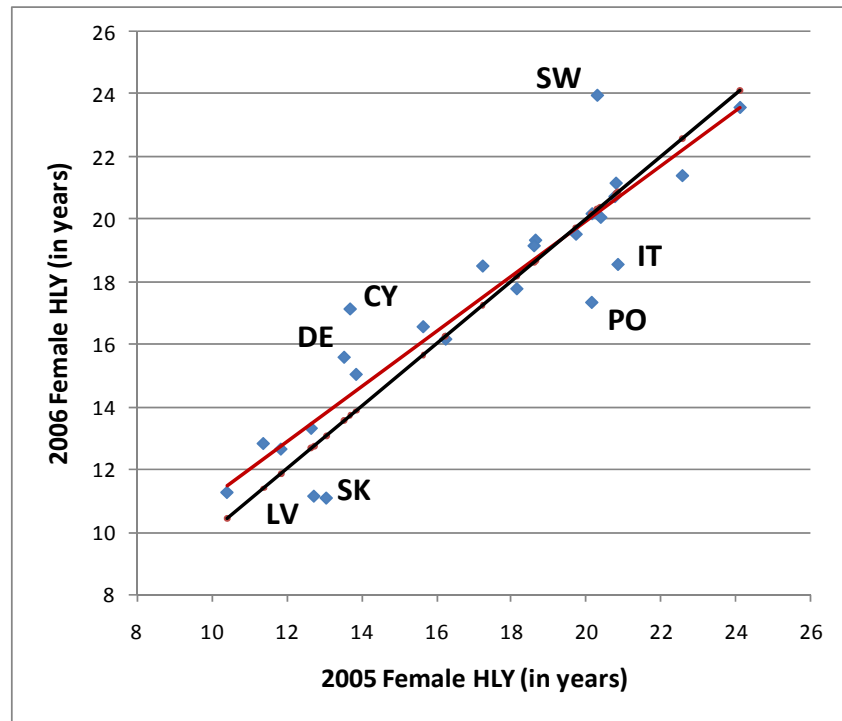
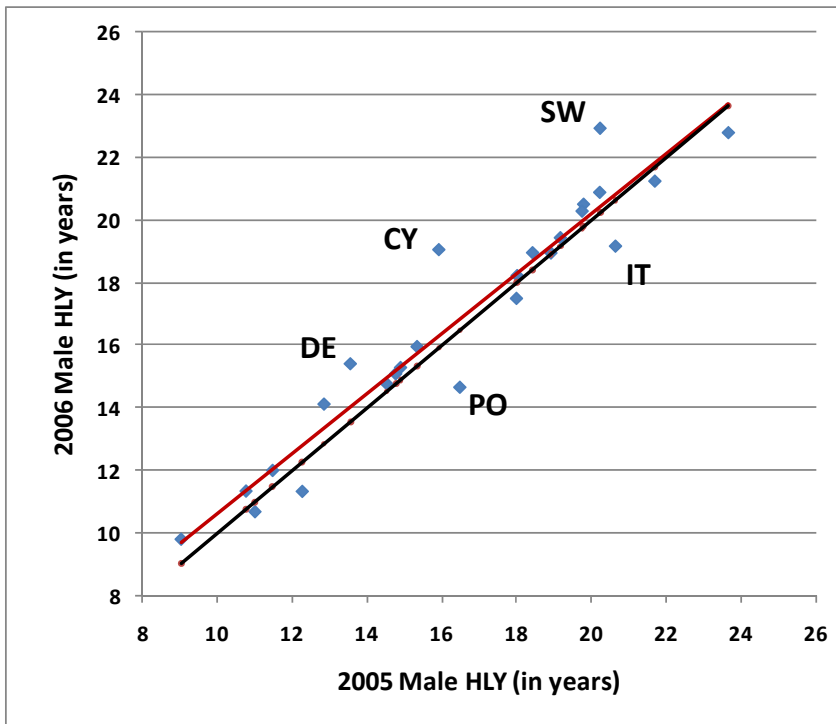
— Line of best fit
— Y=x (2005=2006)

LE at age 50 in the EU, change 2005-2006



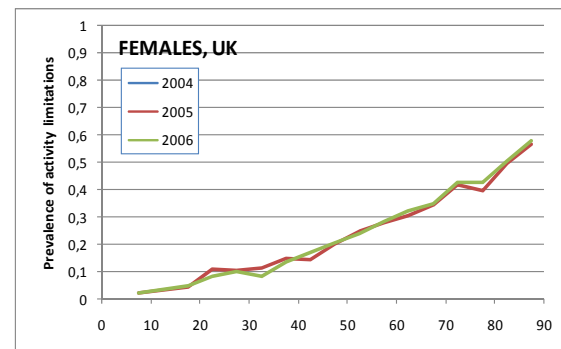
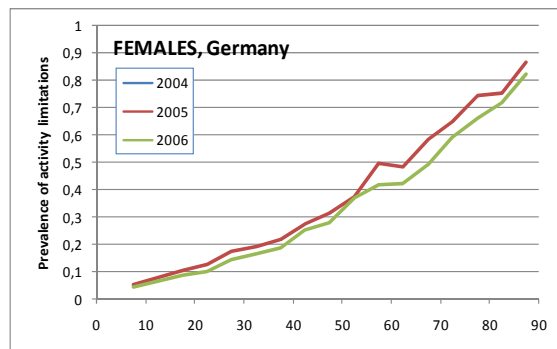
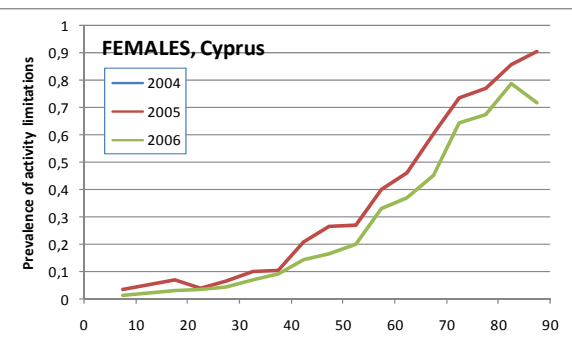
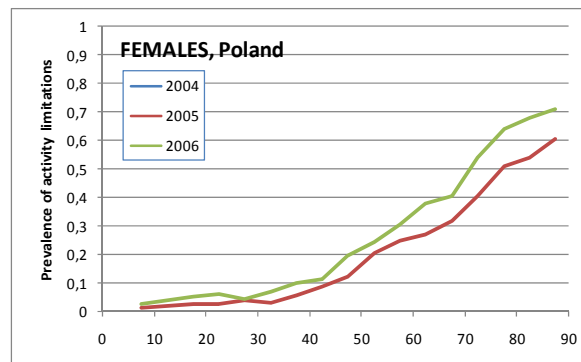
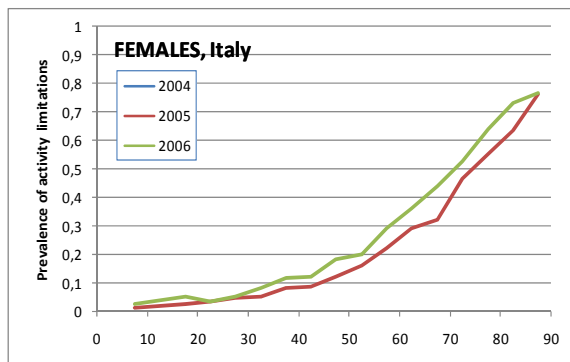
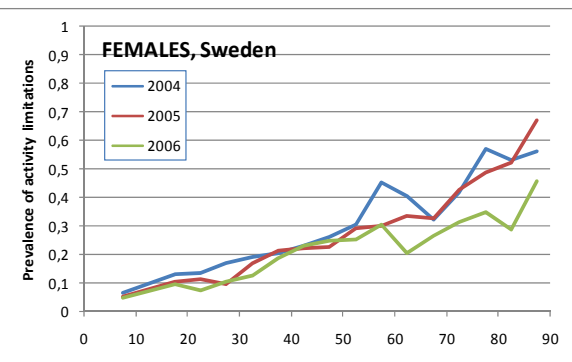
— Line of best fit
— $Y=x$ (2005=2006)

HLY at age 50 in the EU, change 2005-2006

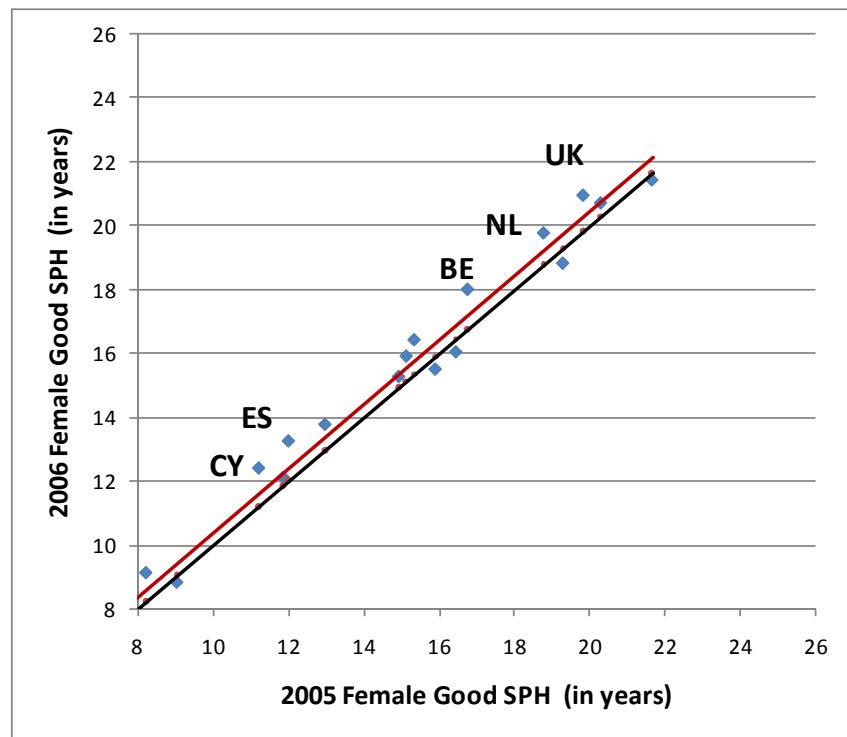
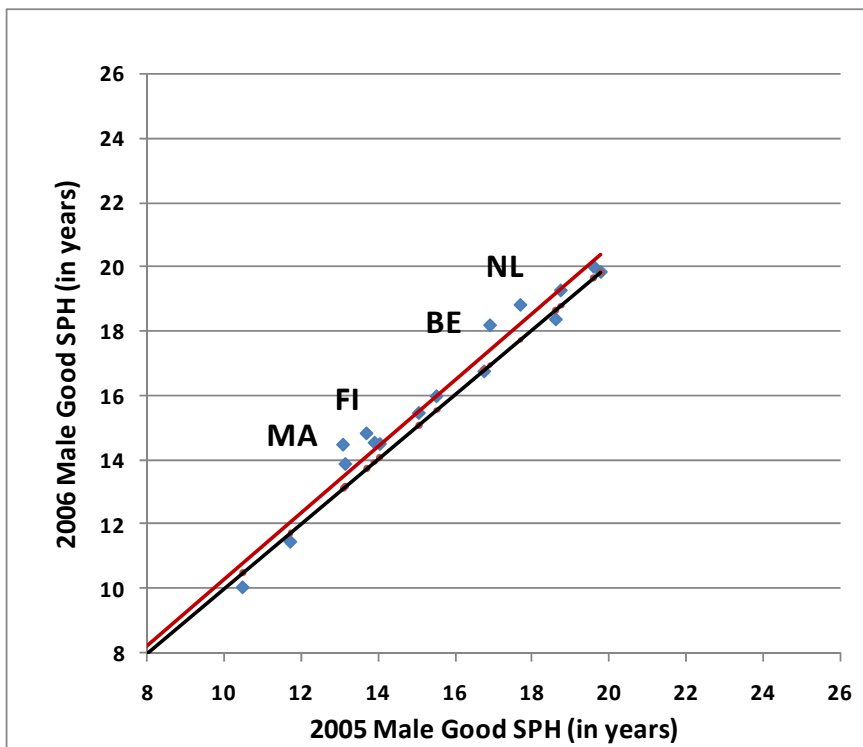


— Line of best fit
— $Y=x$ (2005=2006)

Prevalence of activity limitation by age

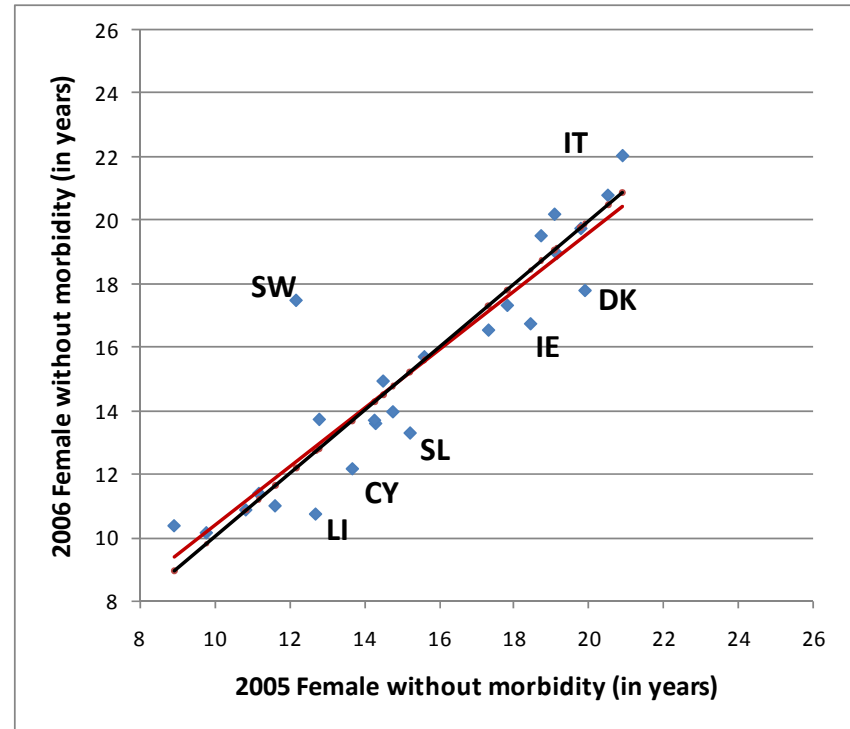
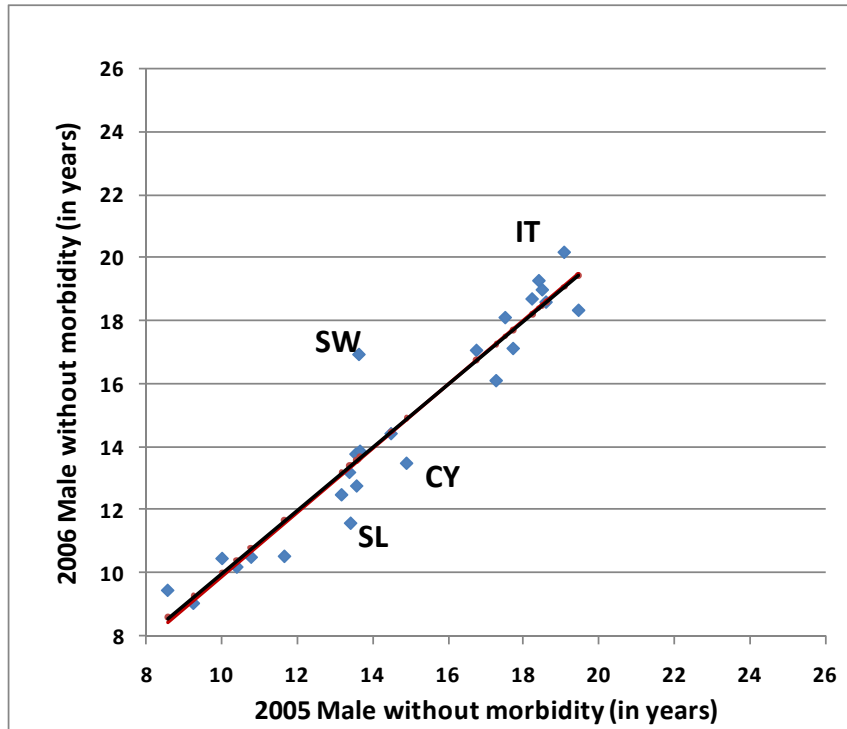


LE in good SPH at age 50, change 2005-2006



— Line of best fit
— $Y=x$ (2005=2006)

LE without morbidity at age 50, change 2005-2006



— Line of best fit

— $Y=x$ (2005=2006)

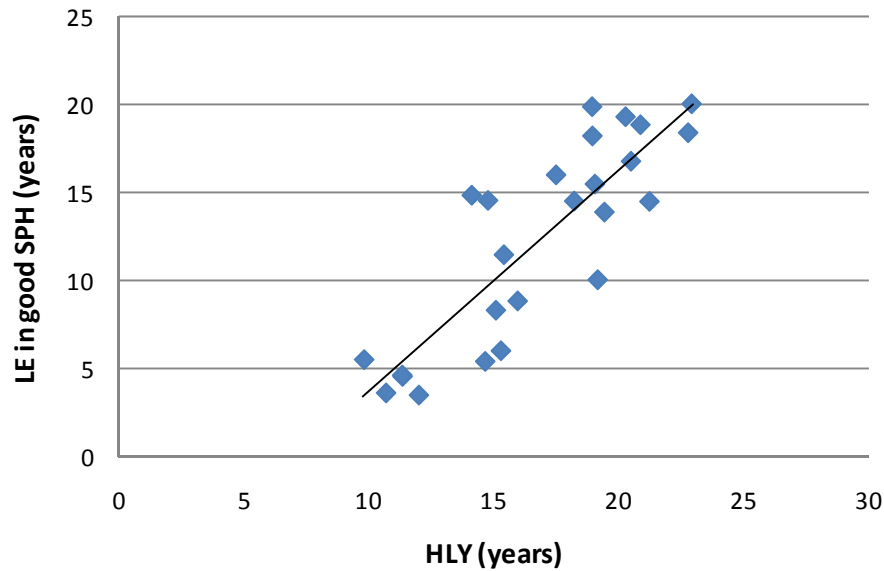
How do changes in HEs relate to each other?

		men			women		
		<i>change in</i>	<i>change in</i>	<i>change in LE</i>	<i>change in</i>	<i>change in</i>	<i>change in</i>
		<i>HLY 2006-</i>	<i>LE in good</i>	<i>without</i>	<i>HLY 2006-</i>	<i>LE in good</i>	<i>LE without</i>
		<i>2005</i>	<i>SPH 2006-</i>	<i>morbidity</i>	<i>2005</i>	<i>SPH 2006-</i>	<i>morbidity</i>
			<i>2005</i>	<i>2006-2005</i>		<i>2005</i>	<i>2006-2005</i>
men	change in HLY 2006-2005	1					
	change in LE in good SPH 2006-2005	0.12	1				
	change in LE without morbidity 2006-2	0.12	0.07	1			
women	change in HLY 2006-2005	0.94			1		
	change in LE in good SPH 2006-2005		-0.44		0.09	1	
	change in LE without morbidity 2006-2005			0.92	0.26	0.80	1

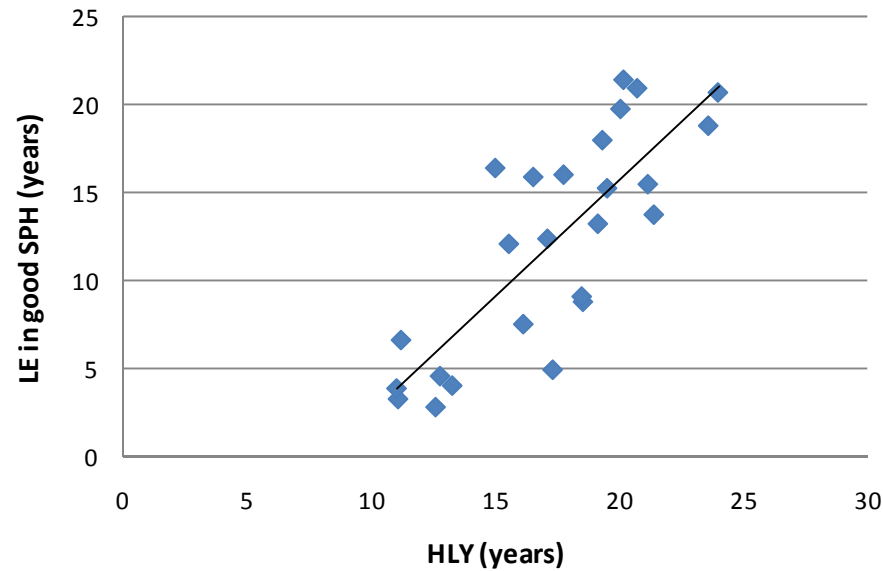
RELATIONSHIP BETWEEN DIFFERENT HEALTH EXPECTANCIES

HLY and good perceived health at age 50, 2006

2006 HLY and LE in good SPH at 50 - Men

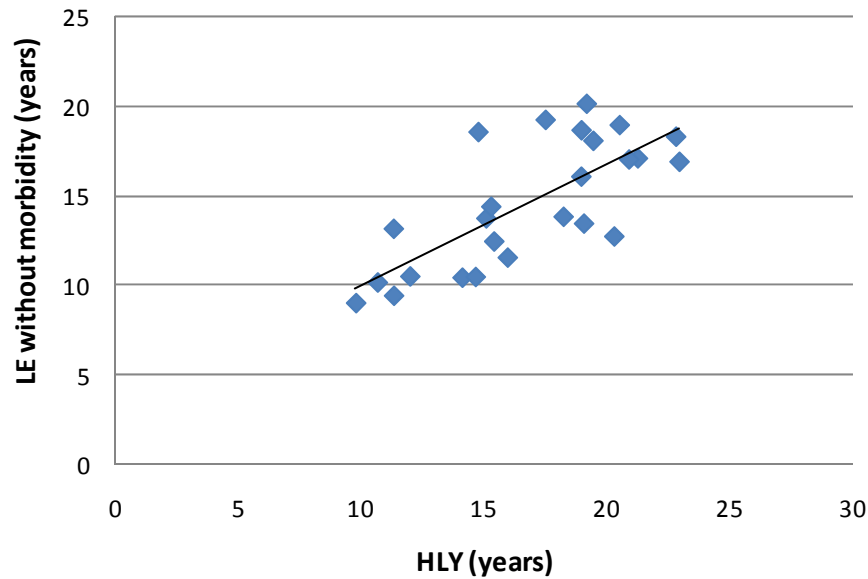


2006 HLY and LE in good SPH at 50 - Women

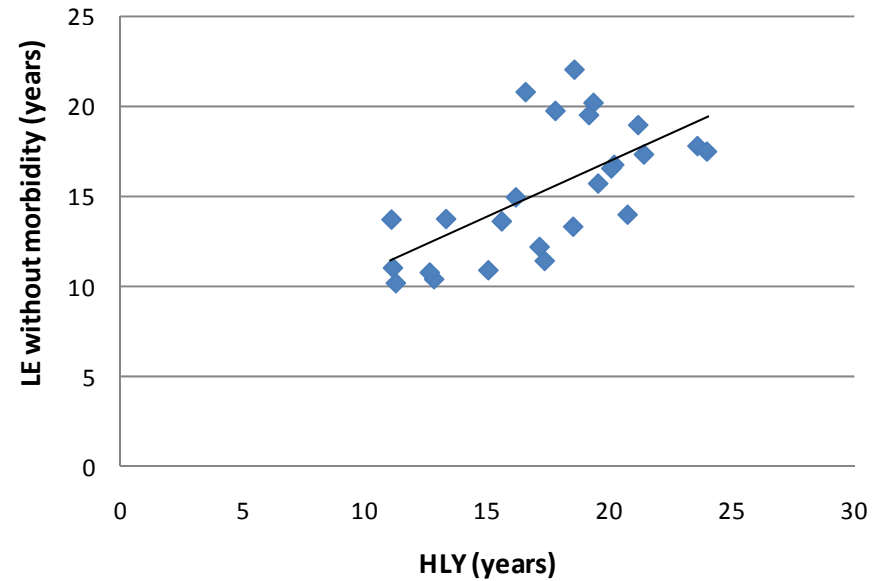


HLY and chronic morbidity at age 50, 2006

2006 HLY and LE without morbidity at 50 - Men

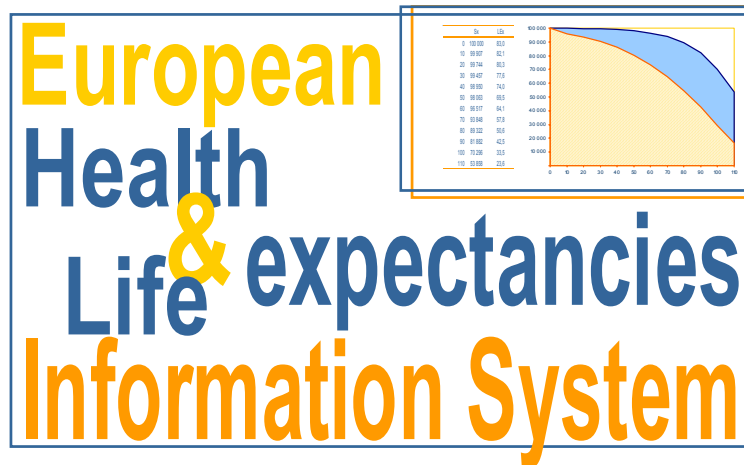


2006 HLY and LE without morbidity at 50 - Women



Conclusions

- For EU25 as a whole, at age 50
 - LE increased by 0.4 yrs
 - HLY (men) and LE in good SPH increase similar
 - LE without morbidity increased very little (0.1 yrs)
- More variation in change between 2005 and 2006 in HLY and LE without morbidity
 - Outliers tended to be same for men and women therefore not random
- HLY correlated with other HE
 - Greater correlation in men than women



**A comparison of health expectancies in the EU25:
results from the EHLEIS project**

www.ehemu.eu